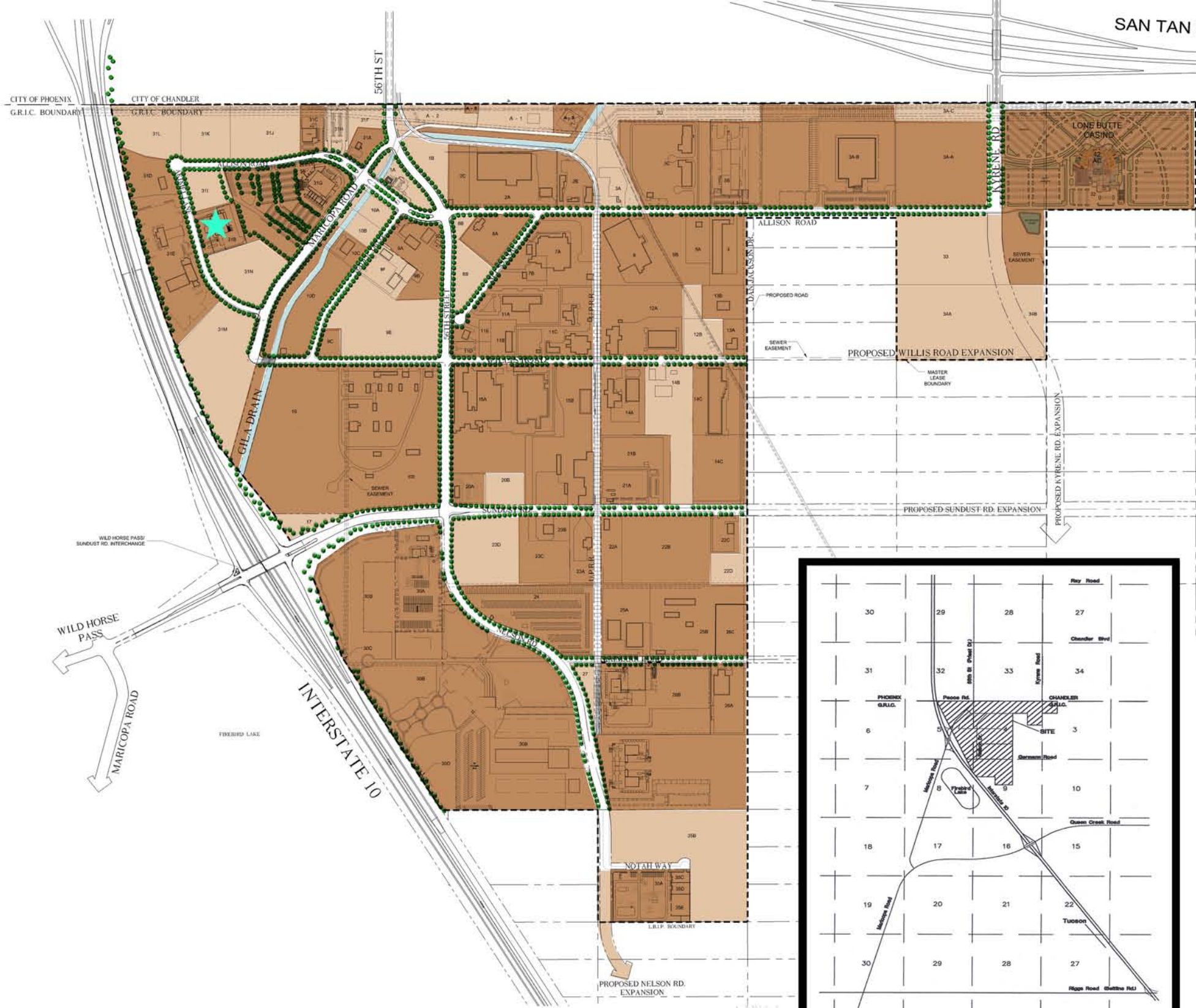
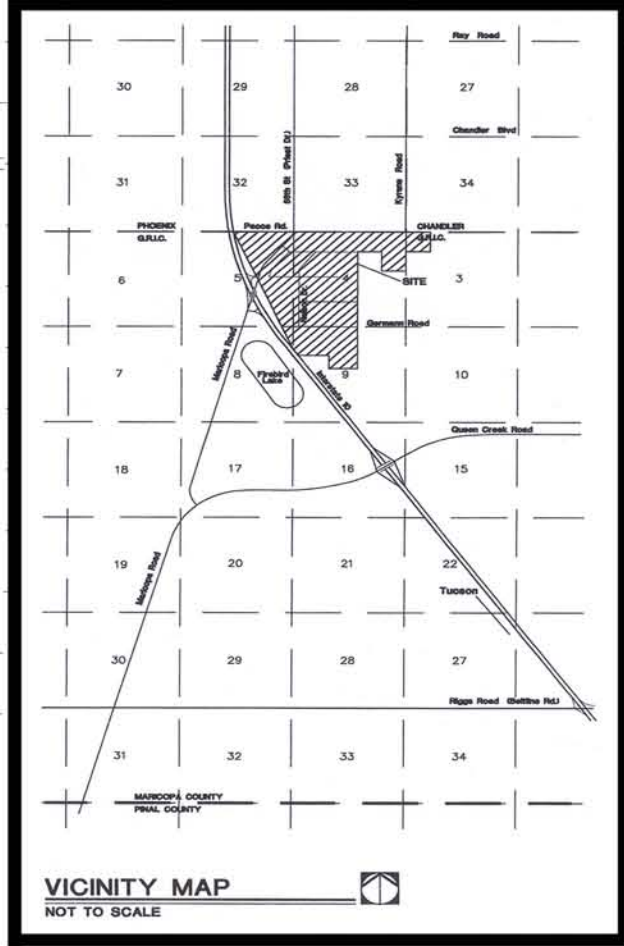


LONE BUTTE INDUSTRIAL PARK TENANTS



- TRACT 1**
A VACANT
B VACANT
- TRACT 2**
A LUMBER PRODUCTS
B ROMIC
C ADESA
- TRACT 3**
A VACANT
B ALEXCO
C ACKER STONE
D VACANT
- TRACT 3A**
A WASTE MANAGEMENT TRANSFER STATION
B CHAMPION HOMES
C VACANT
- TRACT 4**
PIMA VALVE
- TRACT 5**
A McNEIL BROTHERS
B SAN CARLOS IRRIGATION PROJECT
- TRACT 6**
MTD
- TRACT 7**
A CLASSY CLOSETS
B STERICYCLE
- TRACT 8**
A ADESA
B VACANT
- TRACT 9**
A GILA RIVER TELECOMMUNICATIONS
B PHOENIX INTERNATIONAL TELEPORT
C ROCK 'N' ROLL
D VERIZON
E VACANT
F VACANT
- TRACT 10**
A VACANT
B VACANT
C PAC SCIENTIFIC MACHINE SHOP
D ROCK & ROLL MATERIALS
- TRACT 11**
A ARIZ. BOX
B KT FABRICATION
C INDUCTION BILLET (IBC)
D PIMALCO PARKING
E EWING CONSTRUCTION
- TRACT 12**
A THERM-O-ROCK WEST
B VACANT
- TRACT 13**
A TRIUMPH ENGINES - TEMPE
B TRIUMPH PRECISION CASTING
- TRACT 14**
A TRIUMPH FABRICATIONS - PHOENIX
B VACANT
C KAISER ALUMINUM
- TRACT 15**
A PIMALCO / PSI
B SELECT BUILD
- TRACT 16**
PACIFIC SCIENTIFIC
- TRACT 17**
VACANT
- TRACT 20**
A MCDONALD'S
B VACANT
- TRACT 21**
A FERRELLGAS/BLUE RHINO
B GRICUA
- TRACT 22**
A ACCESS RECOVERY
B TRUSSWAY
C SAN CARLOS IRRIGATION PROJECT
D VACANT
- TRACT 23**
A ANIMAL NUTRITION
B IRON CITY RENTALS
C RESERVED
D VACANT
- TRACT 24**
LONE BUTTE RV & BOAT STORAGE
- TRACT 25**
A TRUSSWAY
B TRIANGLE TRUSS
C ADESA
- TRACT 26**
A DOORS BLDG. COMPONENTS, INC./NCI
B SUPERLITE BLOCK
- TRACT 27**
VACANT
- TRACT 30**
A LOVE'S
B BEAUDRY
C GILA RIVER DISPLAYS
D GILA RIVER DISPLAYS
- TRACT 31**
★ A LONE BUTTE TRADE CENTER
B LONE BUTTE PARK OFFICE
C ENVIRONMENTAL STONENETWORKS
D PALM HARBOR HOMES
E FREIGHTLINER
F VACANT
G GILA RIVER GAMING ENTERPRISES
H VACANT
I VACANT
J VACANT
K VACANT
L VACANT
M VACANT
N VACANT
- TRACT 32**
GILA RIVER LONE BUTTE CASINO
- TRACT 33**
VACANT
- TRACT 34**
A VACANT
B RETENTION BASIN
- TRACT 35**
A ROCK SOLID
B VACANT
C PETERSON TRANSPORTATION
D MONTY BROTHERS LANDSCAPING
E A & A PRECAST
- PARCEL A**
1 VACANT
2 VACANT
3 RESERVED



LONE BUTTE



LONE BUTTE BUSINESS PARK

DATE: 1-12-09
REVISED 4-16-09
0 450 900 1350 1800

